

# Heath Mount Primary School



## Newsletter



12th June 2026

Dear Parents/Carers,

Year 2 had the most amazing time at the beach, even after the rain! They thoroughly enjoyed exploring the shoreline, building sandcastles, and were fascinated by the seagulls.

Year 6 girls also had a fantastic time during their visit to The Alexander Stadium as part of the Girls of Brum festival, where they participated in a wide variety of sports.

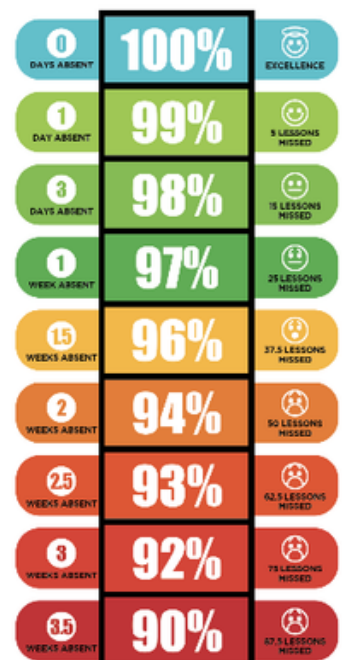
And finally, what we have all been waiting for... our **OFSTED** report has been published! I am sure you will agree that it is a brilliant report. We have been on an incredible journey together, and we are immensely proud of both our children and staff at Heath Mount.

I would like to take this opportunity to sincerely thank you all for your continued help, support, cooperation, and encouragement along the way.

Have a lovely weekend.

Mrs Samuel  
Headteacher

### ATTENDANCE EVERY DAY COUNTS



### PE TIMETABLE



Monday - 1B and Year 6

Tuesday - Reception

Swimming - 4SB

Wednesday - 2RZ and Year 5

Thursday - 2Z, Year 3 and 4A (Tennis)

### DATES FOR YOUR DIARY

MONDAY 29<sup>TH</sup> JUNE  
RECEPTION TRIP TO ATWELL FARM

MONDAY 29<sup>TH</sup> JUNE  
YEAR 5 AND 6 RESIDENTIAL TRIP TO BOUNDLESS ACTIVITY CENTRE

WEDNESDAY 1<sup>ST</sup> JULY  
WHOLE SCHOOL TRANSITION DAY

WEDNESDAY 8<sup>TH</sup> JULY  
SPORTS DAY

THURSDAY 9<sup>TH</sup> JULY  
SUMMER FAYRE

FRIDAY 17<sup>TH</sup> JULY  
SCHOOL CLOSURES AT 1:00 PM FOR THE SUMMER BREAK

Children to wear their PE kits to  
school on their PE days



# THIS WEEK AT HEATH MOUNT



YEAR 2 AND YEAR 3 HAD A WONDERFUL TIME AT WESTON SUPER MARE



A GROUP OF OUR YEAR 6 GIRLS TOOK PART IN THE GIRLS OF BRUM EVENT AT THE ALEXANDER STADIUM



# FRED'S ATTENDANCE SUPERHEROES OF THE WEEK

RG 97.3%

4A 98.5%

5S 99.6%



HERE  
EVERYDAY  
READY  
ON TIME

# ORACY CHAMPIONS OF THE WEEK



EACH WEEK, OUR STAFF CHOOSE A CHILD WHO HAS DEMONSTRATED THEIR ORACY SKILLS IN AN EXCEPTIONAL WAY.

## ORACY CHAMPIONS

YEAR 1 Bilal

YEAR 2 Ranya and Dalya

YEAR 3 Absalat and Abhimanyu

YEAR 4 Abeeha and Leyanna

YEAR 5 Gabriella and Lany

YEAR 6 Maliha and Zakariyya

# STAR of the week

- Year 1 M. Ahmed and Manaal
- Year 2 Haleema and Waleed. Zaid and Safa
- Year 3 Fatima and Ahmed. Arwa and Arden
- Year 4 Seynabou and Ijaaz. Jerry and Sumaya
- Year 5 Aisha and Zephaniah. Roshan and Aibek
- Year 6 Nila and Eliza M. Tuleesha and Ahmed

# Hot Chocolate Friday

Well done to all of the children who were nominated.

This week's winners are:

- Reception Maryam
- Year 1 Maya
- Year 2 Laura
- Year 3 Ahmed
- Year 4 Shindara
- Year 5 Lina
- Year 6 Laibah



### Golden Ticket Winners

- Year 3 - Khloe
- Year 4 - Muadh
- Year 5 - Ajwa

**FREE COURSES**



## Heath Mount Primary School ADULT EDUCATION INITIAL ASSESSMENT

**Tuesday 23<sup>rd</sup> June 2026**  
9am – 12.00pm

Centre Address:  
Heath Mount Primary School, Knutsford Street,  
Birmingham, B12 9SR  
For more information, please contact:  
[info.adultlearning@jcc.ac.uk](mailto:info.adultlearning@jcc.ac.uk)



ENROLLING NOW ON A RANGE OF ADULT LEARNING COURSES

Available Courses:

| COURSES:                       | Pre-Entry | Entry Level 1 | Entry Level 2 | Entry Level 3 | Level 1 | Level 2 | Level 3 |
|--------------------------------|-----------|---------------|---------------|---------------|---------|---------|---------|
| ESOL                           | ■         | ■             | ■             | ■             | ■       | ■       |         |
| Life and Living Skills         |           | ■             | ■             | ■             |         |         |         |
| Maths                          |           |               | ■             | ■             | ■       | GCSE    |         |
| English                        |           | ■             | ■             | ■             | ■       | GCSE    |         |
| Essential Digital Skills       |           |               |               | ■             | ■       |         |         |
| IT                             |           |               |               | ■             | ■       | ■       |         |
| Business                       |           |               |               |               | ■       | ■       |         |
| Health and Care                |           |               |               |               | ■       | ■       | ■       |
| Childcare and Education        |           |               |               |               | ■       | ■       | ■       |
| Teaching Assistant             |           |               |               |               |         | ■       | ■       |
| Access to HE (Education)       |           |               |               |               |         |         | ■       |
| Access to HE (Health and Care) |           |               |               |               |         |         | ■       |



To apply,  
please scan  
the QR code

TEL: 0121 440 4663  
EMAIL: [info.adultlearning@jcc.ac.uk](mailto:info.adultlearning@jcc.ac.uk)  
WEB: [www.jcc.ac.uk/adult-learning](http://www.jcc.ac.uk/adult-learning)



## Heath Mount Primary School ADULT EDUCATION INITIAL ASSESSMENT

**Tuesday 23<sup>rd</sup> June 2026**  
9am till 12pm

We offer a wide range of courses  
including: **ESOL | English | Maths |**  
**Childcare | Health & Care | Education**

Centre Address:  
Heathmount Primary School  
Knutsford Street  
Birmingham  
B12 9SR





# The Heath Mount Summer Raffle Draw



This year's summer fayre will include a Heath Mount themed raffle draw. Please donate coloured raffle items for the colour given to your child's class. These can be good quality items that you already have at home, gifts or a bargain at the shops. The filled hampers will be the prizes in our summer fayre draw.

All donations should be brought in to school the week commencing Monday 11<sup>th</sup> May. **Please note:** We cannot accept any nut-based products or any fresh food items. Raffle tickets will be available to purchase for £1 for a strip Of 5 tickets every morning from Monday 1<sup>st</sup> June.

**Each Class has their own colour.**

Reception and Year 1 = Red    Year 2 = Yellow  
 Year 3 = Orange    Year 4 = Green  
 Year 5 = Blue    Year 6 = Pink

Here are some examples of donations for the raffle draw.



# Sensory Circuits At Home Training for Birmingham Families

Delivered by Occupational Therapists from SEND Therapy Team

This training is designed for parents and carers to learn the following:

- What is a sensory circuit?
- Who would benefit from using a sensory circuit?
- How can I create a sensory circuit for my child?

1 parent or carer is allowed to attend per family. Places will be given on a first come first serve basis.

All attendees will receive a **FREE** sensory circuit resource pack.

| Date                         | Time          | Location  |
|------------------------------|---------------|---|
| 6 <sup>th</sup> July<br>2026 | 9am –<br>11am | Heath Mount Primary School, Knutsford St,<br>Balsall Heath, Birmingham, B12 9SR |

**PLEASE NOTE:** Wear comfortable clothing, bring a bottle of water



## Medical Appointments



We kindly remind you to book appointments for your child outside of school hours whenever possible to minimise disruption to their learning.

If your child's appointment is **in the morning**, bring them to school before the appointment, then bring them back to school after the appointment.

**Only the morning will be an authorised absence.**



If your child's appointment is **in the afternoon**, keep your child in school until you need to take them for their appointment.

If they finish in time, bring them back to **school**.

**Only the afternoon will be authorised absence.**

# HEATH MOUNT WEEKLY MENU

WEEK 2- 2/3, 23/3, 27/4, 18/5, 15/6, 6/7

## MONDAY

Chicken Pasta Bake /  
Sea Stars with  
Tartare Sauce  
Vegetable  
Pasta Bake (V)

Garlic Bread Slice,  
Pomme Noisette,  
Veg of the Day

Belgian Waffle  
with Toffee Sauce  
Fresh Fruit & Jelly

## TUESDAY

Chicken Jambalaya /  
Battered  
Chicken Fillet  
Vegetable Jambalaya (V)

Herb Flatbread,  
Sauté Potatoes,  
Veg of the Day

Chocolate & Beetroot  
Cake with Custard  
Fresh Fruit & Jelly

## WEDNESDAY

Chicken &  
Vegetable Pie  
Cheese, Chive &  
Potato Pie (V)

Roasted New  
Potatoes,  
Veg of the Day

Cherry Shortbread  
Fresh Fruit & Jelly

## THURSDAY

Grilled Chicken Kebabs

Vegetable Samosa  
& Curry Sauce (V)

Naan Bread,  
Boiled Rice,  
Veg of the Day

School Days Tray Bake  
Fresh Fruit & Jelly

## FRIDAY

Cheesy Meatball Pizza  
Margherita Pizza (V)

Chipped Potatoes,  
Veg of the Day

Chocolate  
Cornflake Cake  
Fresh Fruit & Jelly

Available Daily- Jacket Potato with a variety of fillings /  
Fresh salad cart / Fresh Fruit

## Attendance

### What happens if I book a holiday during term time?



A single parent with one child planning to take a one week holiday during term time...

Your holiday will not be authorised, and we strongly advise you to speak with the school before making any bookings. Since your child will miss 5 school days, a penalty notice fine will be issued. The fine is £160, but if paid within 21 days, it will be reduced to £80.

A penalty will be issued for each child.

£160 + £160 + £160



3 x children + 1 parent = £480  
reduced to £240 if paid within 21 days

For a family with 2 parents.

£160 + £160 + £160



3 x children + 2 parents = £960  
reduced to £480 if paid within 21 days

If, in any period within three years, your child has a second and third leave of absence or pattern of irregular attendance:



#### 2nd Time

2 Parents and...

1 x child = £320

2 x children = £640

3 x children = £960

No discount for early payment

#### 3rd Time

A penalty notice fine will not be given and your case will be taken to court.

A magistrate can fine each parent £2,500 for each child.

1 parent & 4 children = £10,000

2 parents & 4 children = £20,000

10 in 10

#### Irregular Attendance

If your child is absent for 10 or more sessions (5 days) in 10 weeks, and their absences are unauthorised, you may be prosecuted.

1 day =  
2 sessions





At Heath Mount Primary School, we promote children's rights in all areas of our curriculum. We want to ensure that ALL children understand their rights so that they are healthy, happy and safe.

Look at the articles below and talk about what they mean.



### UNICEF Rights Respecting Schools Article 32 - Child Labour

**"Governments must protect children from economic exploitation and work that is dangerous or might harm their health, development or education. Governments must set a minimum age for children to work and ensure that work conditions are safe and appropriate."**



### UNICEF Rights Respecting Schools Article 35 - Prevention of sale and trafficking

**"Governments must protect children from being abducted, sold or moved illegally to a different place in or outside their country for the purpose of exploitation."**

**Exploring Article 32 & 35** - How many reasons can you think of why children should be protected from working, especially in dangerous conditions?

#### Did you think of these?

- Their family should have a good enough standard of living without them working.
- Children should be in education.
- Their health and safety should be protected.
- Children's views and best interests should be considered.
- Other harm could come to them in the workplace.
- It could lead to further exploitation or trafficking.
- They should have time to be a child and have all their rights.
- They should have time to rest and play, and to develop their talents.



## Online Safety Quiz

Does your child know how to stay safe online? Test their knowledge with this online quiz.

**You get a message online saying you've won a brand new phone, but you don't remember entering any competition. What should you do?**

A

Click the link straight away to claim the prize.

B

Share the message with your friends so they can try too

C

Ignore the message and tell a trusted adult

D

Give them your details so they can send the prize.

**Correct - C** Unfortunately, you have not won a phone as you didn't enter a competition. This is a trick by scammers who are trying to get information about you

Don't share your personal information

# Safeguarding at Heath Mount Primary School

Please see the safeguarding page on our school website:  
Safeguarding – [Heath Mount Primary School \(excelsiormat.org\)](http://heathmount.excelsiormat.org)

At Heath Mount Primary School safeguarding children is of paramount importance. We have 6 Designated Safeguarding Leads (DSLs) who can be contacted by parents should they have a safeguarding concern. If you have safeguarding concerns about a child, please email school using the following email address: [enquiry@heathmount.excelsiormat.org](mailto:enquiry@heathmount.excelsiormat.org). Our DSLs are:



## Meet your safeguarding team:



Mrs Samuel  
Headteacher,  
SENCO &  
Lead DSL



Miss Beach  
Deputy Headteacher  
Deputy DSL



Miss Taylor  
Pastoral Manager  
Deputy DSL



Mrs Yufei  
HLTA  
Deputy DSL



Mrs Smith  
HLTA  
Deputy DSL



Miss Brook  
Teacher  
Deputy DSL



Miss B  
Office Manager  
DSL



## BIRMINGHAM CHILDREN'S TRUST

### Contact details

Monday to Thursday: 9:15am to 5:15pm  
Friday: 9:45am to 4:15pm  
Telephone: 0121 300 1000

### Emergency out-of-hours

Telephone: 0121 673 4006

The Children's Advice and Support Service (CASS) provides a single point of contact for professionals and members of the public who want to seek support or raise concerns about a child.

We want to keep all children and young people in Birmingham safe from harm. If you are concerned about a child please contact us. We will listen, assess your concerns, and can take action if a child is at risk.



Cruelty to children must stop. FULL STOP.

## If you have any concerns at all about a child's safety or wellbeing, don't hesitate to contact us

It doesn't have to be an emergency — you might be looking for guidance and support on issues affecting children. Whatever it is you're worried about, our dedicated child protection specialists will be able to advise and take any necessary action.

Whatever your worry — call us on 0300 800 5000, email [help@nspcc.org.uk](mailto:help@nspcc.org.uk), or [submit our online form](https://www.nspcc.org.uk/what-we-do/our-services/child-protection) — we can help. We also have advice about [supporting the parent of abuse](https://www.nspcc.org.uk/what-we-do/our-services/child-protection).

Due to an increase in demand across our service, our voice Helpline is currently operating between the hours of 10am-4pm on Monday to Friday. However, you can email [help@nspcc.org.uk](mailto:help@nspcc.org.uk) at any time. It's free and you don't have to say who you are. If you think a child is in immediate danger, please call the police on 999 straight away.

