



# Our Local Area



## Vocabulary

map	A representation of the whole or part of an area.
location	The specific place or site of something.
address	Details of where a building is.
city	A large town.
Suburb	A district (part) of a city.
Local Area	The area around where you currently live.
redevelopment	the act or process of changing an area of a town by replacing old buildings, roads, etc. with new ones.
Green space	A community space consisting of land (such as parks) rather than buildings.
pollution	Damage cause to water or air by harmful substances or waste.
Place of worship	A building or space where people gather to perform religious acts.
Physical feature	A naturally occurring feature.
Human feature	A man-made feature.

Dear parents,

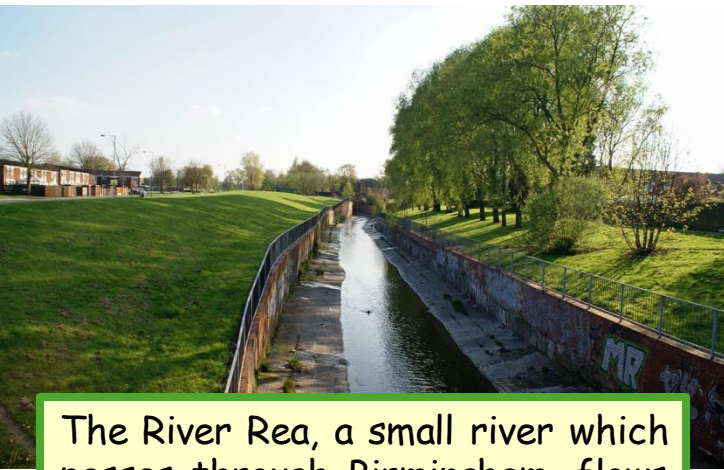
Our next Humanities topic is a Geography unit called 'Our Local Area'. Please help your children to prepare for this topic by learning some of the key words and the facts on this sheet.

There are some homework activities on the back of this sheet. Your child can complete these at any time. Your child's teacher would love to see what they have created.

Thank you for your support,  
Kind regards,  
Year 1 Teachers



Balsall Heath is a suburb in Birmingham, which is the second-largest city in the UK. It's in the West Midlands, near the middle of England. There is around 15,000 people living in the area. Balsall Heath is about 2 miles (3.2 km) south of Birmingham city centre. It's a short journey, taking around 10 minutes by car or bus, or about 30 minutes to walk.



The River Rea, a small river which passes through Birmingham, flows near Balsall Heath.



Green Spaces in the City: Even though it's in a city, Balsall Heath has parks and open spaces like Calthorpe Park and Pickwick Park, which are important for the environment and wildlife.

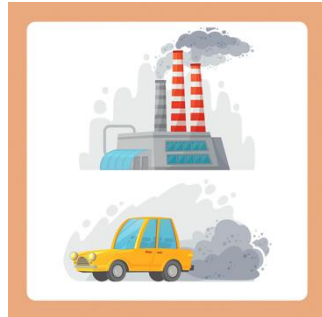


The environment is all around us. The environment plays an important part in taking care of life on Earth because it provides us with air, food and water. As responsible citizens, it is important that we look after the environment in our local area.



#### Littering

This is when people drop their rubbish on the ground and don't recycle it or put it in the bin.



#### Pollution

Pollution is when waste or chemicals are released into the environment. Air pollution can make people unwell.



#### Single-use Plastic

Plastic that is used once and not recycled can be harmful to plants and wildlife.

### Homework Ideas:

- Identify and draw a picture of a landmark in your local area (for example: a park, library or place of worship). Write a few sentences about why it is important.
- Create a map of your local area - including your home, school and other key places.
- Interview a family member, neighbour, or a family friend about what they like about the local area and how it has changed over time.
- Go on a nature walk and take pictures of the wildlife that you see.
- Create a poster to encourage people to look after their local area.