



Brazil



Vocabulary

Amazon River	The second longest river in the world.
biome	Areas of the planet with a similar climate and landscape, where similar animals and plants live.
Capital city	A city that is home to the government of a country.
climate	The average weather conditions in a place over 30 years or more.
Carbon dioxide	A gas that is breathed out by animals and humans. This gas traps heat on the Earth making us warmer.
deforestation	The removal of trees from a forest.
Extreme weather	Any weather that is different from normal.
Human features	Objects in the environment that have been built by humans (man-made)
Indigenous tribe	The people who originally lived in a place, rather than people who moved there from somewhere.
migration	The movement of people (and animals) from one place to another.
photosynthesis	A process where plants take light, water and carbon dioxide and change it into food that they need and oxygen.
Physical features	Natural objects in the environment.
tropical	An area around the middle of the world where it is warm all year round.
rainforest	A tall, dense forest found in a tropical area that has lots of rain.
South America	The Earth's fourth largest continent.
urbanisation	The process by which more and more people leave the countryside to live in cities.
Water cycle	The way that water is taken up from the sea, rivers, soil, etc. and then comes back down as rain or snow.



Dear Parents,

Our first Humanities topic is a Geography unit about 'Brazil'. Please help your children to prepare for this topic by learning some of the key words and the facts on this sheet.

There are some homework activities on the back of this sheet. Your child can complete these at any time. Your child's teacher would love to see what they have created.

Thank you for your support,
Kind regards,
Year 3 Teachers

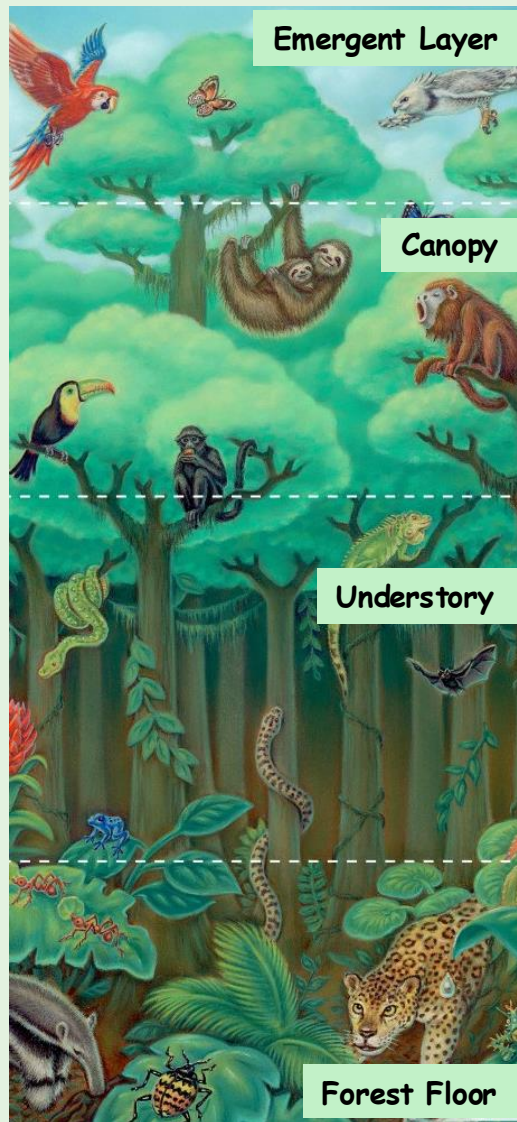
The Rio Carnival

The Rio Carnival is the largest celebration in both Brazil and the whole world, with over two million people visiting Rio de Janeiro to take part in it each year. The Carnival lasts for five days and it takes place on the Friday before Lent (which is a Christian tradition before Easter). The Carnival dates back to the 1650s and it started as people playing games in the street and making fun of one another. Now it is very different with floats, colourful outfits, loud music and plenty of samba dancing.



A rainforest is a very dense, warm and wet forest with a tropical climate. They are habitats for millions of different animals and plants.

The **Amazon rainforest** is the largest **tropical** rainforest in the world. It is found in the continent of **South America** and spreads across nine countries.



Emergent Layer

Canopy

Understory

Forest Floor

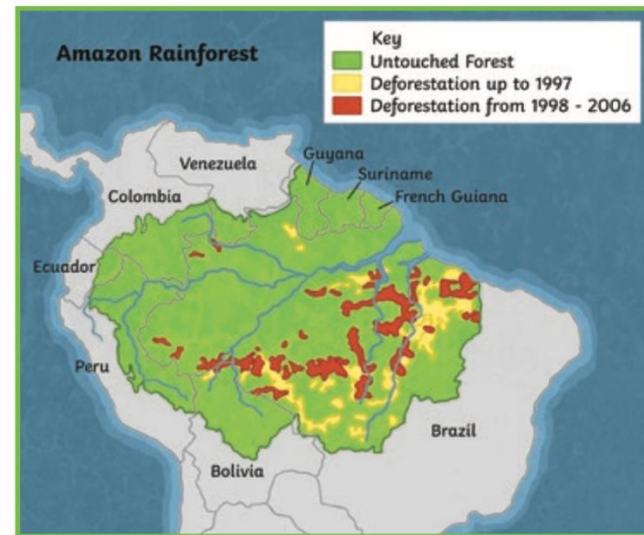
A rainforest is made up of many different layers.

The **emergent layer** is made up of the tallest trees in the rainforest. Some can reach 70 metres tall. They have huge leafy crowns that spread out to catch as much sunlight as possible.

The **canopy** is dense leafy layer with trees about 40 metres tall. They spread their branches out to catch most of the sunlight and rain. This is the most popular place to live in the jungle.

The **understory** is full of leafy bushes and small trees entwined with vines. It is dark and hot here. Many animals cross between this layer and the canopy above and many are nocturnal.

The **forest floor**, or shrub layer, is covered in a carpet of dead leaves. This layer is dim and shady. The lack of sunlight means fewer plants grow here.



The **Amazon rainforest** is facing **deforestation** because **trees are being cut down to make space for farming, roads, and buildings.**

Causes of Deforestation	
1	To clear space for farming: growing crops (e.g. soya beans & palm oil) and space cattle to generate cheap beef.
2	Chopping down trees for wood.
3	To build roads to mine for metals, gold & diamonds.
4	To dig for oil.
5	To flood areas to make dams & generate electricity.

Impact of Deforestation	
1	An area the size of 20 football pitches is destroyed every 60 seconds.
2	½ of the tropical rainforests we had are gone.
3	28,000 species of animals are expected to become extinct in the next 25 years.
4	Local people's homes are destroyed.
5	Levels of carbon dioxide in the air are increasing and oxygen is decreasing.

Homework Ideas:

- Make a musical instrument that you could play at the Rio Carnival.
- Draw a map of South America and label on it with Brazil and the other countries in South America. Do not forget to label ant the major rivers and cities too.
- Create a rainforest diorama.
- Draw or make a model of some of the animals that you would find in the Amazon Rainforest. What facts can you find out about them?
- Create a model or a sketch of the Christ the Redeemer statue.
- Create a fact file about Brazil.
- Pele is one of Brazil's most famous footballers. What can you find out about him?